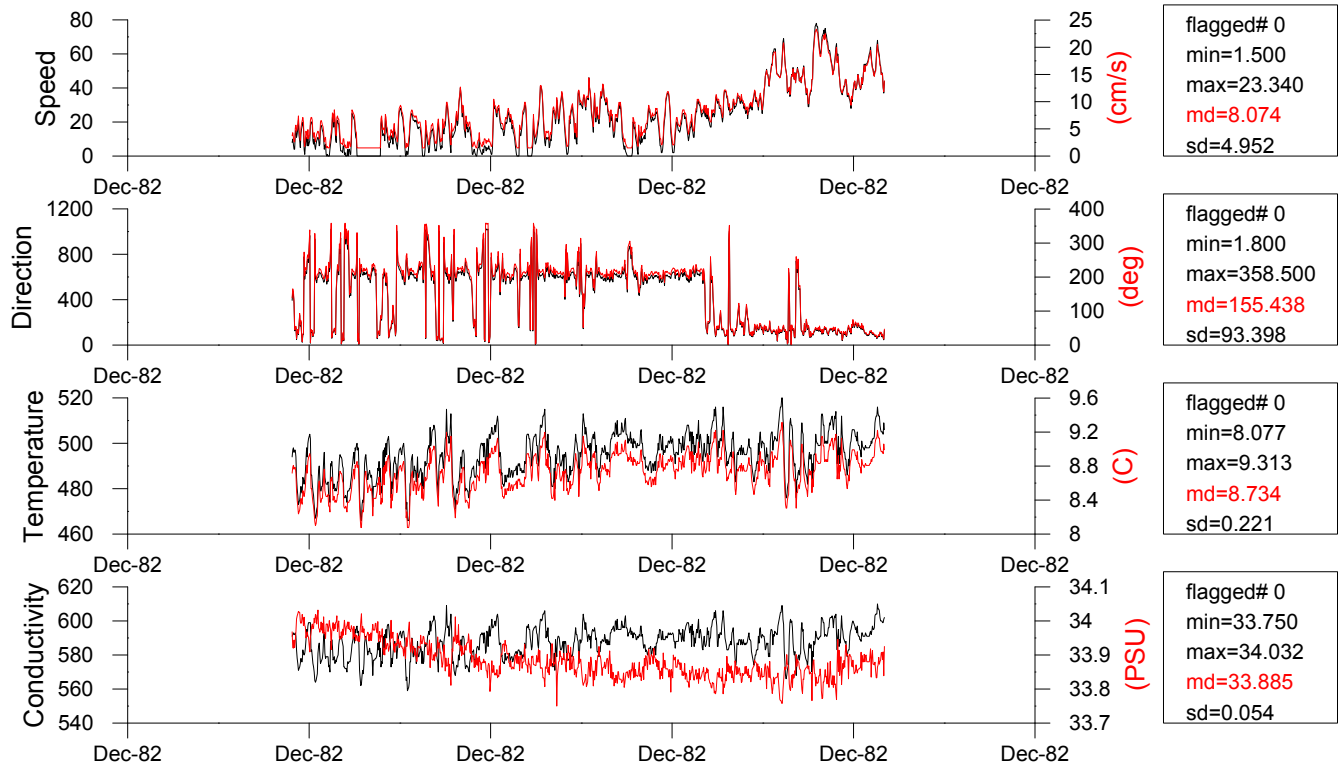


Time series composite PLOT (mooring ID:FJ_198212_S)

| | | | |
|-----------|---------------------------|---------------------|------------------------|
| database | :GFI_MOORINGS.FDB | PI | :Harald Svendsen |
| absnum | :792 (internal QC flag=0) | Project | : n/a |
| RCM# | :4223 (RCM4) | | |
| RCM depth | :75 | Bottom depth | : n/a |
| start | :02.12.1982 09:50:00 | records# row data | :1168 (unflagged) |
| stop | :10.12.1982 12:20:00 | records# converted | :941 |
| interval | :10 min | duration | :8.10 days |
| latitude | :59.41666 | magnetic correction | :-4.0 deg. (not added) |
| longitude | :6.15000 | Calibration Sheet | :19810306_4223.pdf |



Note. Each graph contains time series in engineering (left axis, black curve) and physical (right axis, red curve) units.
 Number of flagged values as well min, max, mean and standard deviations in physical units are shown to the right.